

Tradename Material Safety Report

Tradename: Walocel MT 10000-GO and MT 10000-PV

Chemical: Hydroxyethyl Methylcellulose

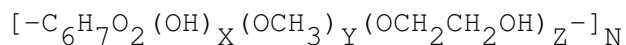
Grade	Technical
Form	Powder or Granule
Molecular Weight (Mw)	1.4000 MM
Molecular Weight (Mn)	0.1100 MM
Ionic Character	Nonionic
Degree of Substitution	1.80 - 2.00
Molar Substitution	0.18 - 0.22

Producer: Dow Chemical

Product Identification

CAS Number: 9032-42-2

Formula



First Aid

Eye Contact	wash w/ water
Skin Contact	wash w/flowing water
Inhalation	remove to fresh air

Ingredients

	PEL	TLV
	(ppm)	(ppm)
Hydroxyethyl Methylcellulose	93.57 wt %	
Sodium Chloride	1.43 wt %	
Water	5.00 wt %	

Physical Data (as Shipped)

Color	White
Odor	None to Slight
Taste	None
Organic Volatiles	0.00 wt %
Total Volatiles	5.00 wt %
Solubility in Water	Soluble in cold and warm H2O

Tradename Material Safety Report

Fire Protection Information

Extinguishing Media	CO2, dry chemical
Unusual Fire and Explosion Hazards	Dust may explode if ignited

Reactivity Data

Conditions to Avoid	dust cloud
Hazardous Decomposition Products	None
Hazardous Polymerization	Does Not Occur

Occupational Control Procedures

Eye Protection	Recommended
Respiratory Protection	Recommended
Ventilation	Required
Special Precautions	slippery surfcs, avoid heat

Health Hazard Data

Eye Contact Hazard	None
Skin Contact Hazard	None
Skin Absorption	Does Not Occur
Acute and Chronic Oral Toxicity	Insignificant
Toxicity Level, LD50 (Rat)	10.0000 g/Kg
Inhalation Threshold Limit	15 mg/cu m

Spill, Leak and Disposal Procedures

Hazardous Spill	Does Not Occur
Action on Spill	mechncl cln-up
Disposal Method	burn/landfill