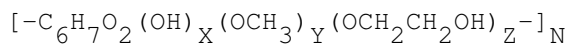


**Tradename Composition Report****Tradename:** Walocel MT 10000-GO and MT 10000-PV**Chemical:** Hydroxyethyl Methylcellulose

Grade	Technical
Form	Powder or Granule
Molecular Weight (Mw)	1.4000 MM
Molecular Weight (Mn)	0.1100 MM
Ionic Character	Nonionic
Degree of Substitution	1.80 - 2.00
Molar Substitution	0.18 - 0.22

**CAS Number:** 9032-42-2**Formula****Product Composition**

## Active Ingredients

Hydroxyethyl Methylcellulose	93.57 wt%
------------------------------	-----------

## Other Ingredients

Sodium Chloride	1.43 wt%
-----------------	----------

Water	5.00 wt%
-------	----------

Ash Content as Na <sub>2</sub> O	0.80 wt%
----------------------------------	----------

Organic Volatiles	0.00 wt%
-------------------	----------

Total Volatiles	5.00 wt%
-----------------	----------

Insolubles in Water	0.00 wt%
---------------------	----------

**Intrinsic Viscosity, Nonionizing Conditions**

Solution	Aqueous Solution
----------	------------------

Intrinsic Viscosity	9.9500 dl/g
---------------------	-------------

Intrinsic Viscosity (dl/g) = k Mw <sup>a</sup>	
--	--

k	0.0073000
---	-----------

a	0.510000
---	----------

Temperature	20 C
-------------	------



## Tradename Composition Report

### Intrinsic Viscosity, Ionizing Conditions

Solution	Aqueous Solution
Intrinsic Viscosity	9.9500 dl/g
Intrinsic Viscosity (dl/g) = $k M_w^a$	
k	0.0073000
a	0.510000
Temperature	20 C

**Activity** 1.000

### References

TB:Walsrode W 402/203,MSDS,HWSGR,K+O,  
G:Granule,P:Powder,V:w/retarded swelling